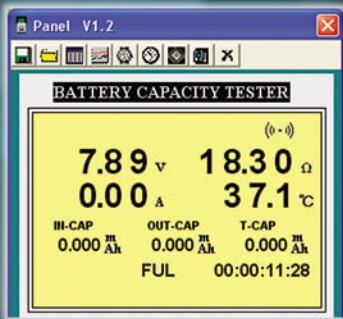
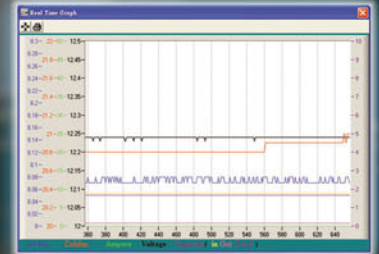


33 Battery Capacity Tester

- Reads the "True Life" of battery Capacity (Resistive / Voltage / Current & Temperature)
- Wide Range: 0 ~ 1,200AH
- Built-In Comparator
- RS-232 Interface / Software
- Datalogging function
- Load Test Analysis (Charge / discharge)

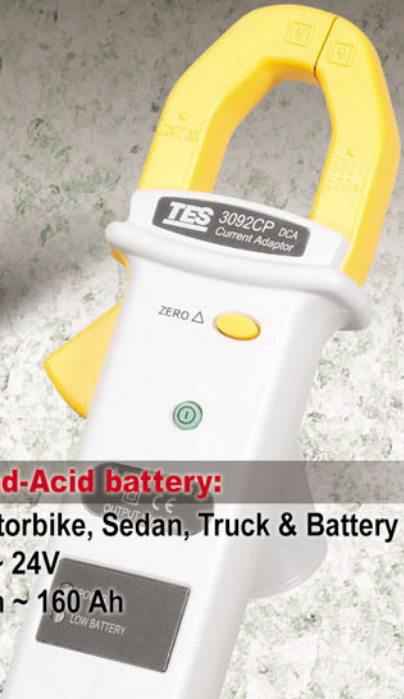
Load Test



Carbon-Zinc, Alkaline battery:
 (AA, AAA, C, D / 9V)
 1.5V / 9V
 625mAh ~ 8350mAh

Lithium battery:
 (Cellular, Camera, Notebook)
 3.6V ~ 14.8V
 650mAh ~ 7200mAh

Lead-Acid battery:
 (Motorbike, Sedan, Truck & Battery Bank)
 6V ~ 24V
 2 Ah ~ 160 Ah



TES-33 Battery Capacity Tester (RS-232)



FEATURES

Test Condition Without Shutting Down Battery.
Simultaneously Measure Battery Resistance, Voltage, Current, Temperature.

Auto-hold and Auto-data storage.

Comparator Function.

Rates Conditions as Pass, Warning, or Fail.

Memory and Read Function

Compact and Lightweight.

RS232 PC Interface



APPLICATIONS

Storage Battery Systems Battery Capacity Testers,
Check battery condition in seconds, with the battery in service!



SPECIFICATION

Battery Types Tested	Compact storage batteries, Alkali and lead-acid batteries..
Battery Capacity	0 to 1200AH
Resistance	Ranges : 4mΩ, 40mΩ, 400mΩ, 4Ω, 40Ω, 400Ω Resolution : 1μΩ, 10μΩ, 100μΩ, 1mΩ, 10mΩ, 100mΩ Accuracy : 4mΩ : ±(2% reading ±8digits) / 40mΩ~400Ω : ±(0.8% reading ±6digits)
Measurement Condition	Current : Approx. 40mA, 4mA, 400μA, 40μA, 4μA Frequency : 1KHz±30Hz
DC Voltage	Range : 6V, 60V Resolution : 1mV, 10mV Accuracy : ±(0.1%rdg ±6digits)
Temperature	Range : -20°C to 60°C (-4°F to 140°F) Resolution : 0.1°C / 0.1°F Accuracy : ±1°C / ±1.8°F
DC Current	Range : 60A, 600A Resolution : 0.01A, 0.1A Accuracy : 60A : ±(2%rdg+20dgt), 600A : ±(2%rdg+2dgt)
Open Circuit Voltage	5V max
Manual Data Memory	999 data sets
Continuous Data Memory	6000 data sets (only use PC download)
Comparator	Setting : Resistance upper and lower limits and voltage throughhold limit. Memory : 99 sets of values

Operating Environment	0°C to 40°C (32°F to 104°F), 80%RH or less, non-condensing.
Maximum Input Voltage	60VDC
Power Supply or AC Adapter	Six AA size 1.5V alkaline batteries
Battery Life	5.5 hours
Weight	Approx. 530g including batteries
Dimensions	Approx. 198(L) × 94(W) × 49(H)mm
Accessories	Clip – type test lead with temperature sensor, Pin – type test lead, 3092CP DCA current adaptor, Zero adjustment board, Instruction manual, batteries, AC adaptor, Optical RS232 cable, CD PC software, Carrying case.